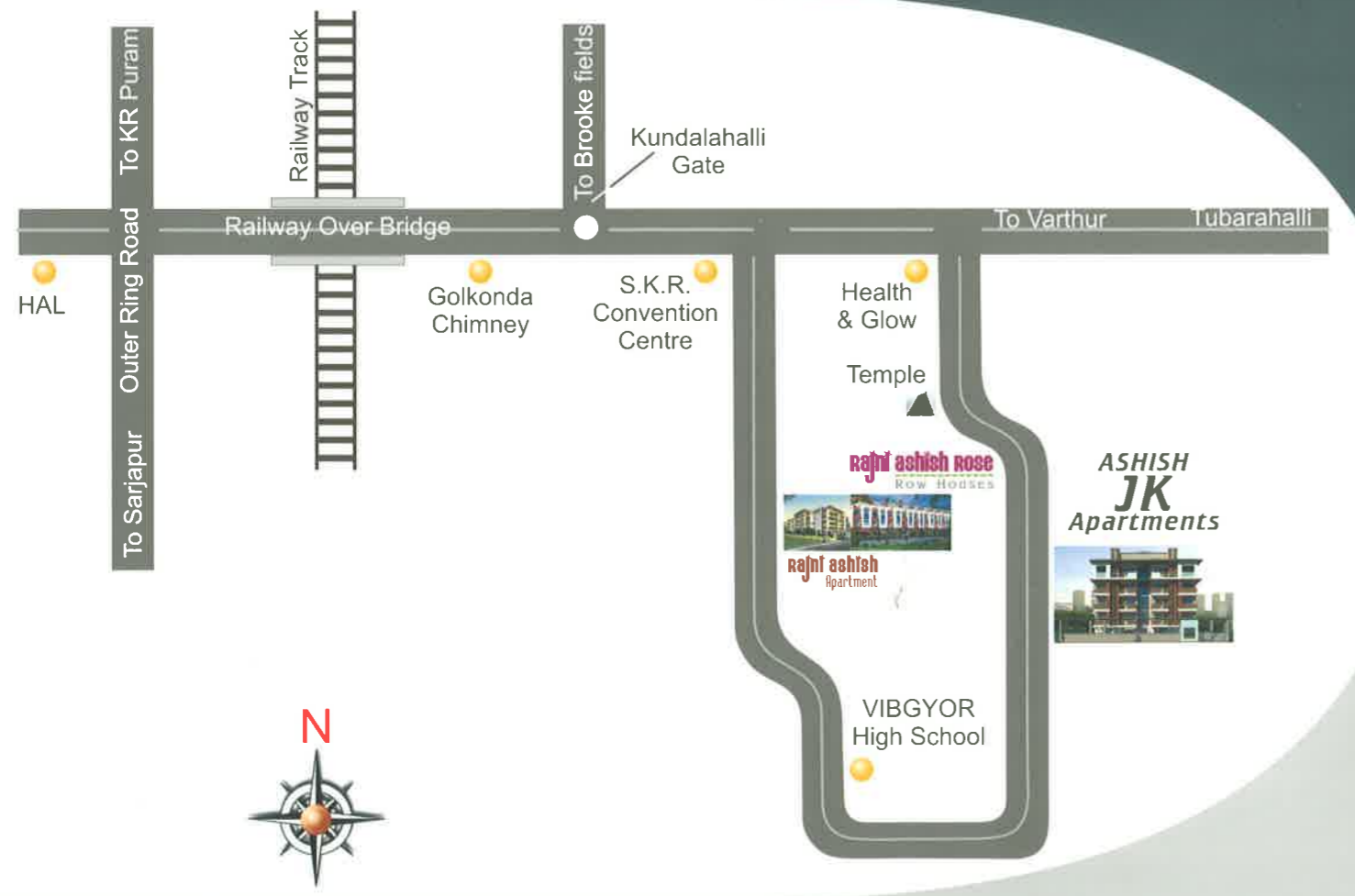


**BLOCK-D**



a project of  
  
**Aashish**  
 DEVELOPER & BUILDERS

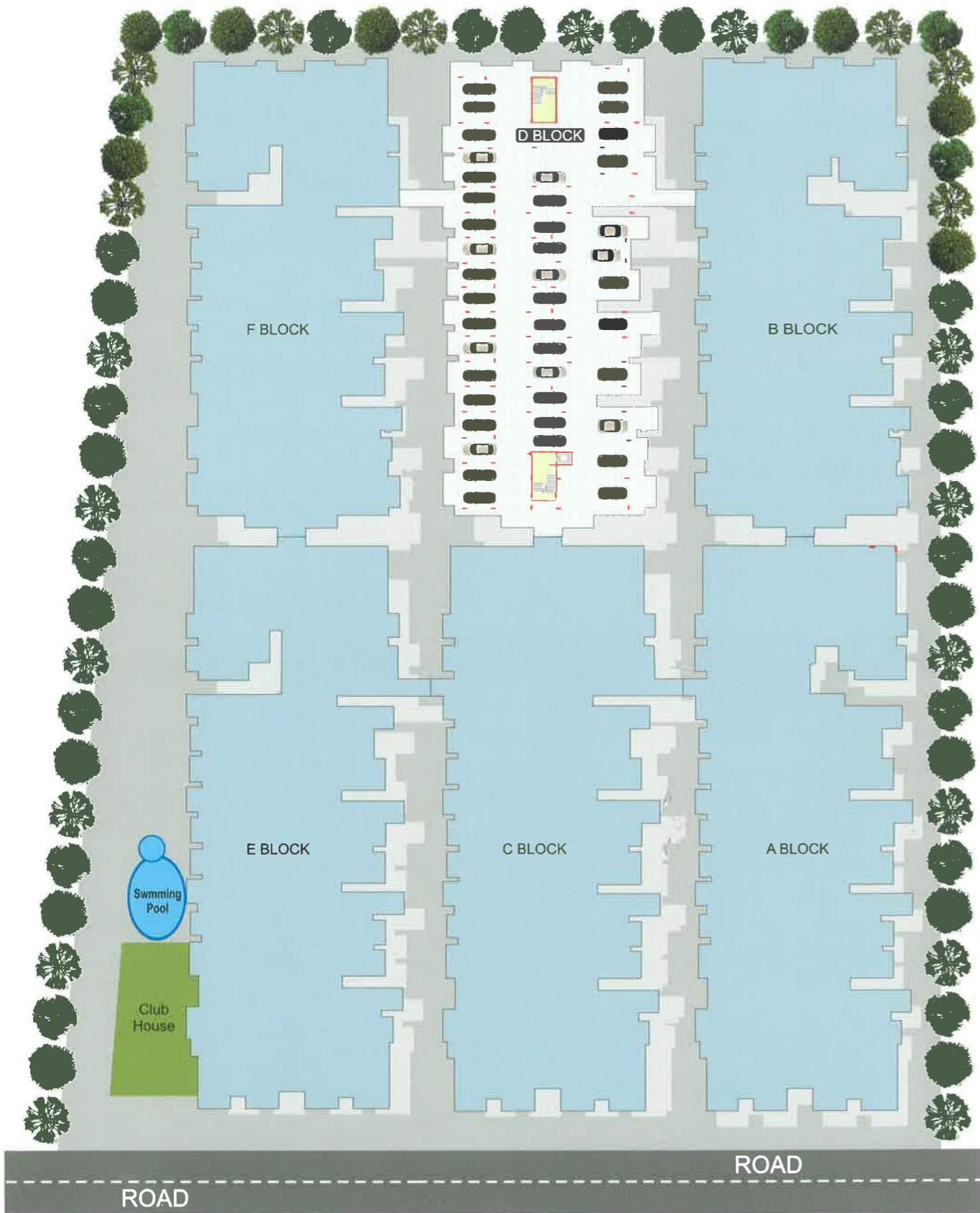
65/3, Behind Sriram Samruddhi, Near Vibgyor School  
 Tubarahalli, BANGALORE - 560 066  
 E-mail : aashishbuilders@gmail.com  
 Website : www.aashishdeveloperandbuilders.com  
 Mobile : 93422 26111, 080-4205 3254

architects  
  
**VASANT KUMAR ASSOCIATES**  
 ARCHITECTS • ENGINEERS • INTERIOR DESIGNERS  
 69/50, 9<sup>th</sup> Main, 13<sup>th</sup> Cross, Wilson Garden  
 Bangalore - 560 030. Phone : 080 - 2221 9910  
 e-mail : vasantkumard@yahoo.com

This brochure is purely conceptual and is not a legal offer. The promoter / Architects reserve the right to add /delete/after any detail / specification /elevation mentioned herein

*Finest affordable Homes in East Bangalore*

# STILT FLOOR PLAN



## SPECIFICATIONS

### STRUCTURE

- Framed RCC Structure with RCC beams and columns

### FLOORING

- Vitrified Tiles for living, dining, Bedrooms & Kitchen areas.
- Ceramic tiles for all Toilets, Balcony & Utility areas.

### WALLS

- Putty finished acrylic distemper painting for all interior walls and ceiling. Exterior wall surface painted with snowcem paint.

### DOORS

- Main door frames of Teak wood, shutters of teak veneer and melamine polished.
- Inside doors putty finished flush door, painted with superior quality enamel paint.

### WINDOWS

- Aluminum sliding windows with guard bars with plain Glass. Mosquito mesh shutter for master bedroom.

### ELECTRICAL

- TV and telephone points in living room and master bedroom.

- Electrical switches of Anchor Roma or similar.

- One Earth Leakage Circuit Breaker (ELCB) for each flat.
- Earthing with copper wire using loop system.

### KITCHEN

- 'L' shaped polished Black Granite counter top.
- One 2'0" wide loft in Kitchen.
- Standard size stainless steel sink with drain board.
- Ceramic glazed tiles dado up to 2'0" ht above platform.

### Provision For:

- For Aqua-guard, Exhaust Fan and adequate power points in Kitchen
- Provision for Washing machine point with plumbing & water drain line in utility area.

### TOILETS

- Pressure checked plumbing and drainage lines to ensure total leak proof toilets.
- Nova/Jaquar or equivalent C.P. fittings.
- White colored Sanitary Ware.
- Hot and Cold Mixer unit with overhead shower.
- Provision for Exhaust fan and Geyser.
- Select glaze / ceramic tile dado up to 7' height.

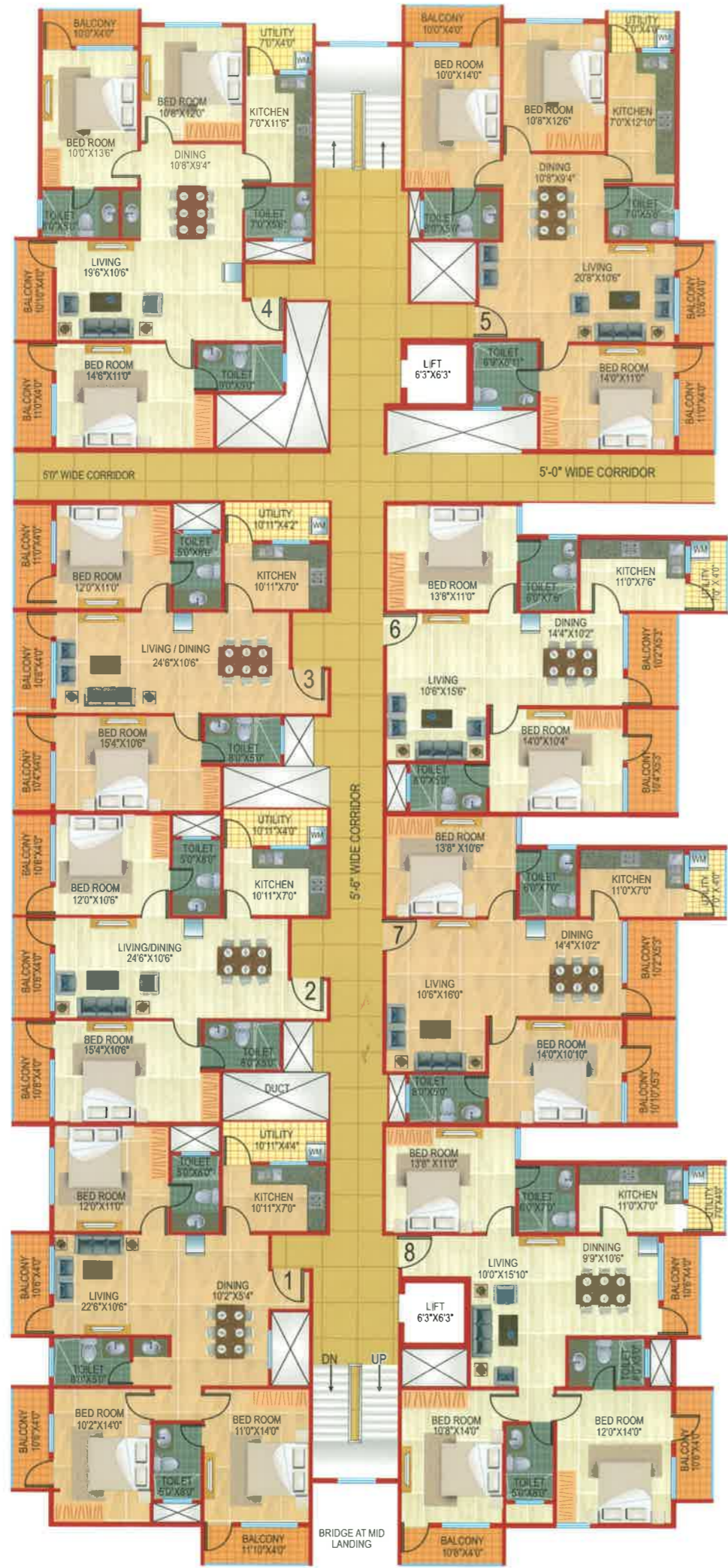


## AMENITIES

- Elegant Entrance Lobbies of Marble/Granite flooring
- Elegant Two Elevators
- Plush Green Landscaped surroundings.
- Children's play area.
- Intercom from every flat to security.
- Provision for high speed Broadband connection.
- Servants/Drivers Toilets in the Stilt Floor.
- Car Parking in Stilt Floor (at extra cost).
- Generator back up with soundproof acoustic enclosure for common areas, Lifts & pump.
- Common underground and overhead water tanks with adequate
- Storage capacity, with bore wells
- Swimming pool
- Indoor games
- Gym



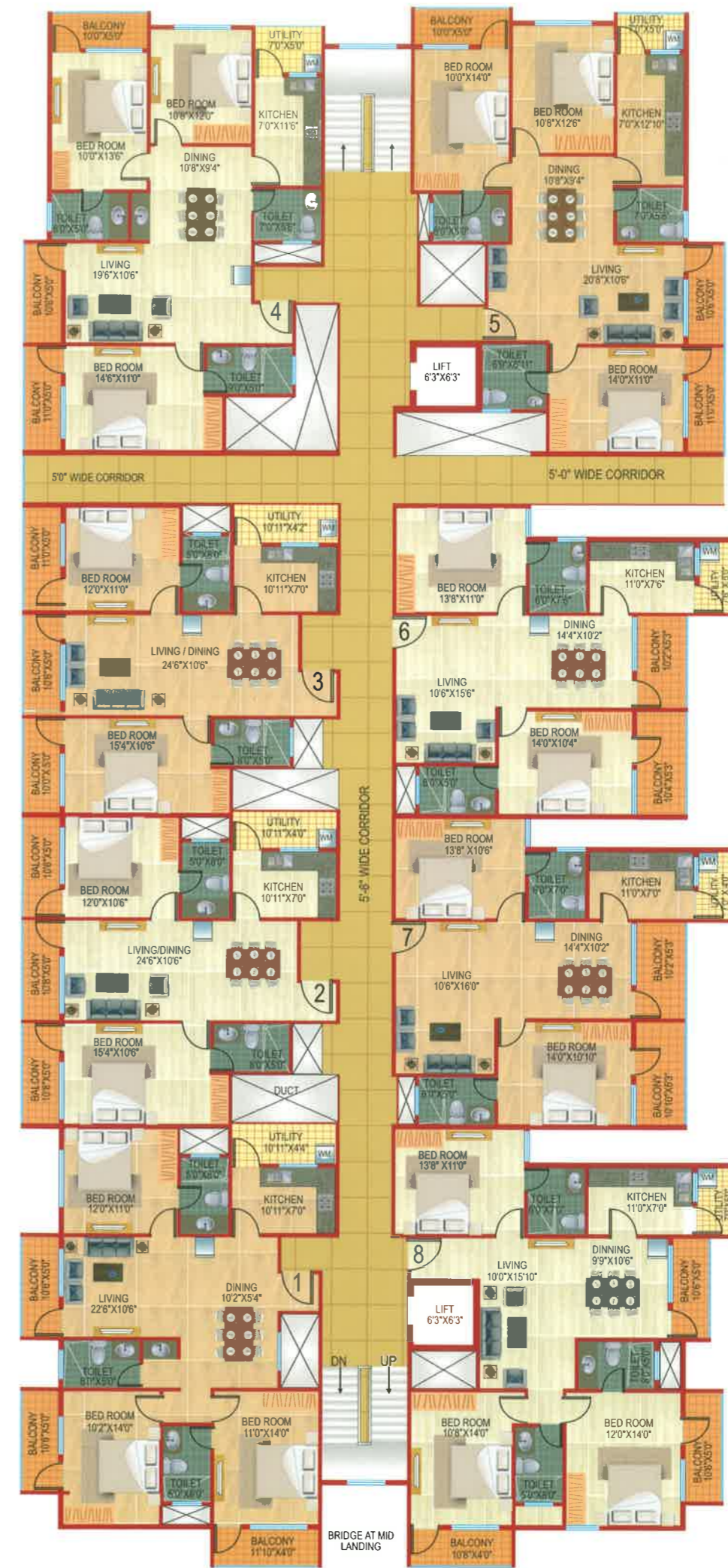
# GROUND FLOOR PLAN



FLAT NOS	GROUND FLOOR	TYPE
1	1520 SFT	3 BED
2	1170 SFT	2 BED
3	1175 SFT	2 BED
4	1475 SFT	3 BED
5	1460 SFT	3 BED
6	1195 SFT	2 BED
7	1190 SFT	2 BED
8	1495 SFT	3 BED



# TYPICAL FLOOR PLAN



FLAT NOS	TYPICAL FLOOR	TYPE
1	1546 SFT	3 BED
2	1210 SFT	2 BED
3	1215 SFT	2 BED
4	1525 SFT	3 BED
5	1510 SFT	3 BED
6	1205 SFT	2 BED
7	1200 SFT	2 BED
8	1535 SFT	3 BED



# INDIVIDUAL FLATS

# INDIVIDUAL FLATS



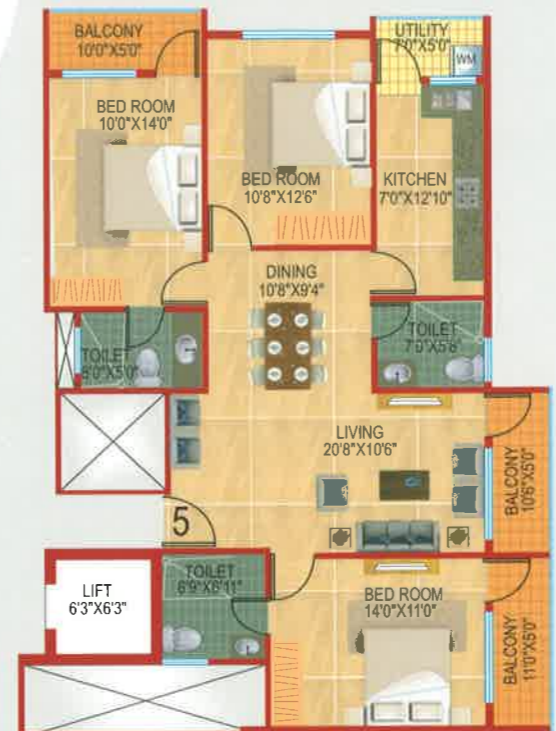
**FLAT 1** 1520 SFT



**FLAT 2** 1170 SFT



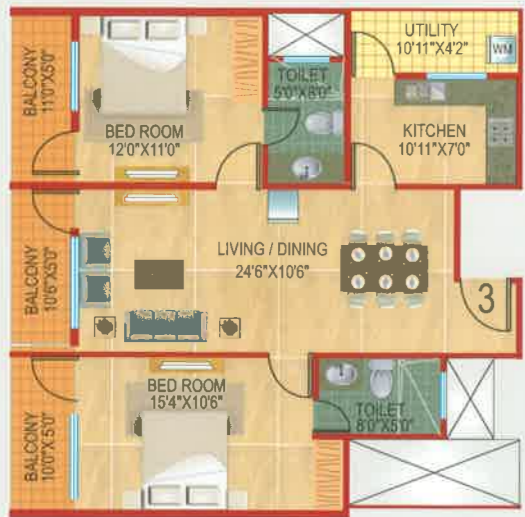
**FLAT 5** 1460 SFT



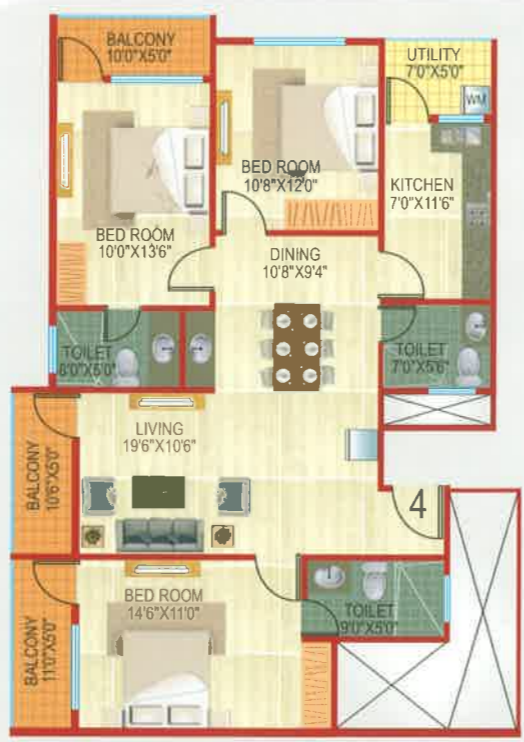
**FLAT 6** 1190 SFT



**FLAT 3** 1175 SFT



**FLAT 4** 1475 SFT



**FLAT 7** 1190 SFT



**FLAT 8** 1495 SFT

